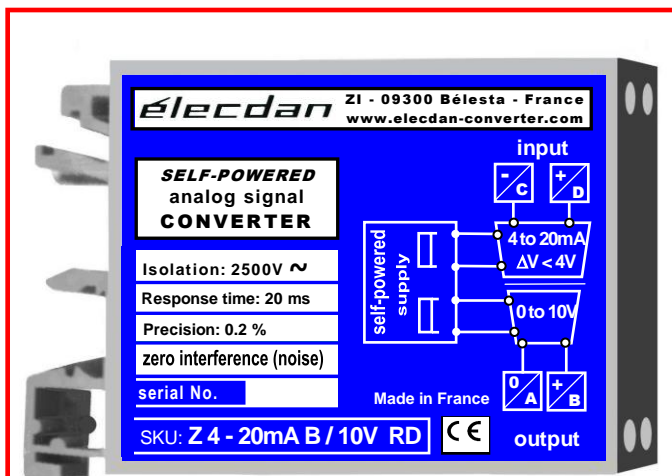
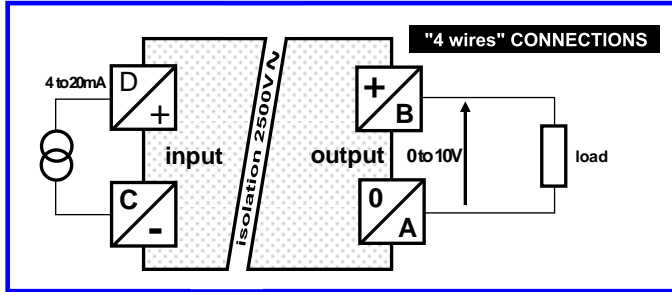
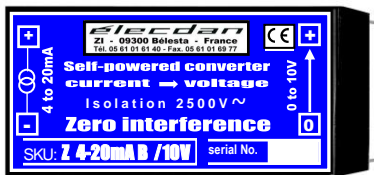


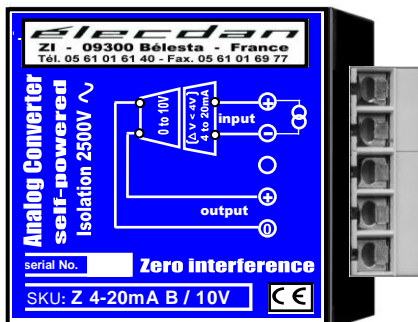
Fully powered on the input current loop and drops less than 3.4 V



Case for DIN rail: 66 x 53 x 12.5 mm
SKU: Z 4-20mA B / 10V RD



Case for PRINTED CIRCUIT: 50.8 x 25.4 x 11 mm
SKU: Z 4-20mA B / 10V CI



Case for WALL mounting: 50.8 x 50.8 x 11 mm
SKU: Z 4-20mA B / 10V P

Not generating any noise interference, this "passive" quadripole converts, isolates and outputs within 0 to 10V analog signals from 4 to 20mA applied to its input.

Input

- applied signal: 4 to 20 mA (accidental maximum: 80 mA)
- ΔV between C and D in the current loop: < 3.4V

Output

- output signal: 0 to 10V
- load: $\geq 220 \text{ k}\Omega$

Full-scale accuracy better than 0.2%

Response time

- regular: 20 ms
- upon request: your choice from 1 millisecond to 10 seconds

Isolation 2500V~

Consumption only 4 to 20mA of the input current loop

Protections

- against reversal of connections on the input
- against accidental overvoltage on input: up to 80 mA
- against overloads and short-circuits
- isolation: $\geq 5000 \text{ V}\sim$
- increased reliability because of no external power supply
- against vibrations; tropicalisation with moulding
- sealing IP67, except connections
- elimination of the faulty-contact risk (no DIL switch)
- negligible temperature rise (high performance conversion)
- total absence of noise interference
- electromagnetic compatibility CEM 89 / 336 / CE

Temperatures

- coefficient: $< 2.10^{-4} / ^\circ\text{C}$
- operation: -20°C to $+60^\circ\text{C}$
- storage: -40°C to $+90^\circ\text{C}$

SKU	Pre-tax price
Z 4-20mA B / 10V RD	
Z 4-20mA B / 10V CI	
Z 4-20mA B / 10V P	

Upon request :

- Two channels completely isolated in a box for DIN rail (66 x 53 x 12.5 mm or 50.8 x 50.8 x 11 mm).
- Both inputs can be connected in series.